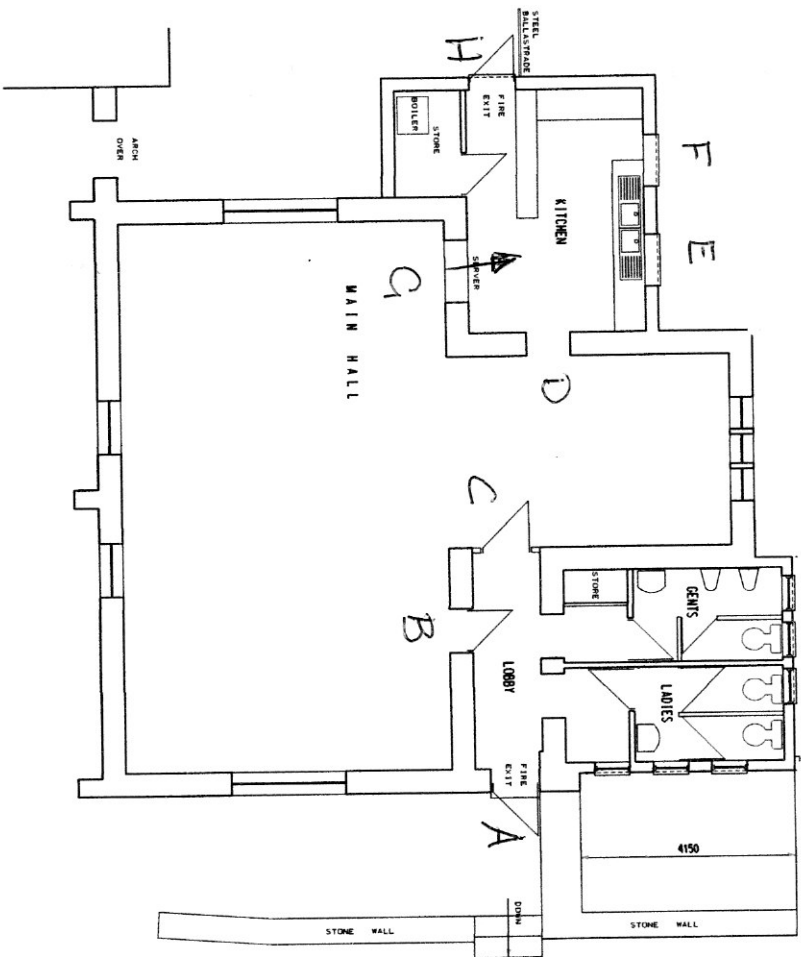


Ventilation Arrangements for Nympsfield Village Hall During Hire



Plan of Nympsfield Village Hall

- Door A to be kept open during hire
- Door B not to be touched
- Door C to be left open
- Door D to be left open
- Windows E and F to be opened
- Fan G to be switched on but NOT moved
- Door H (fire door) to be left shut