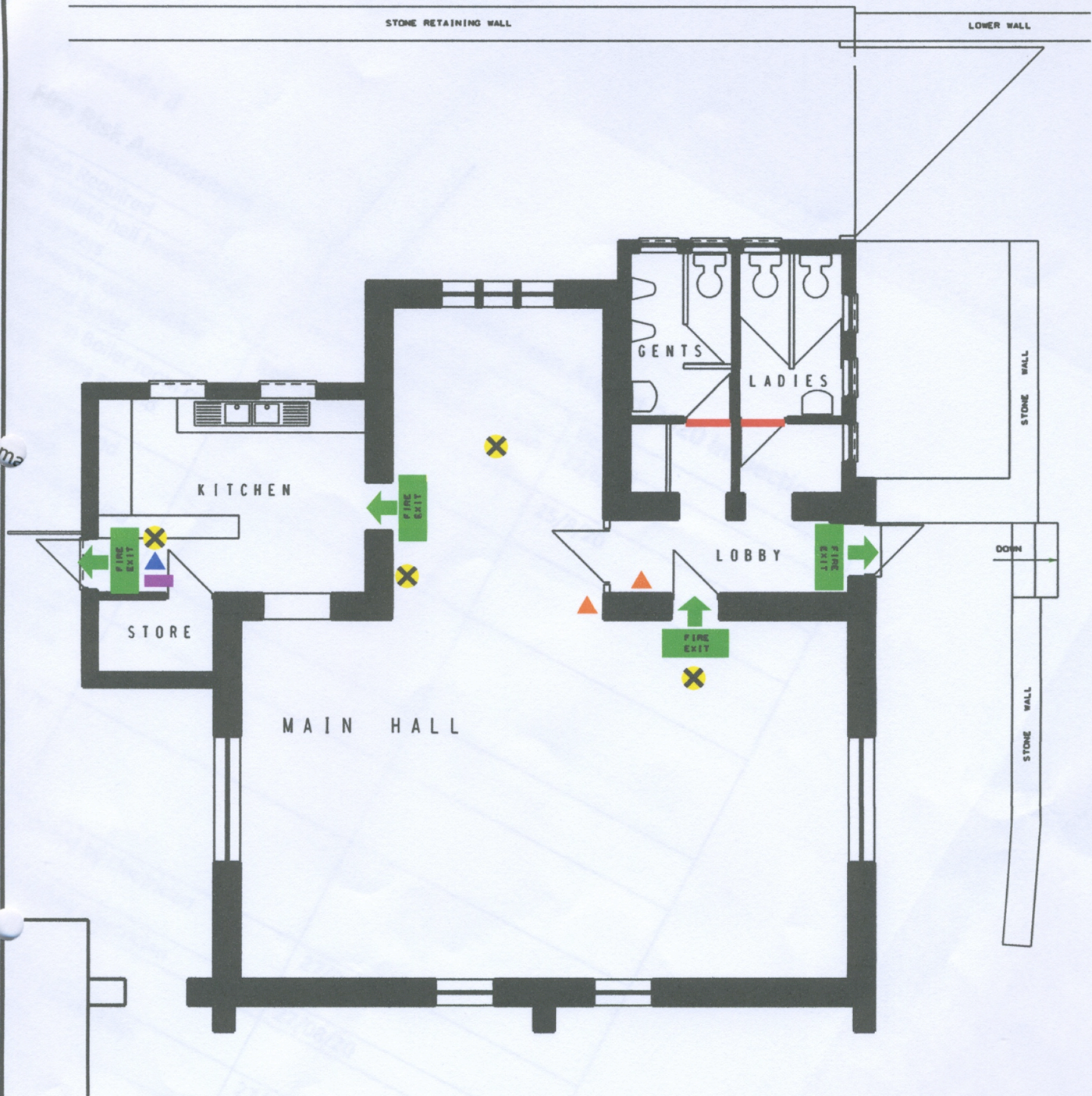





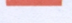


# FIRE SAFETY PRECAUTIONS



-  FIRE EXIT SIGN
-  EMERGENCY LIGHTING
-  FIRE EXTINGUISHER FOAM (GENERAL FIRES)
-  FIRE EXTINGUISHER CO<sub>2</sub> (ELECTRICAL FIRES)
-  FIRE BLANKET
-  FIRE DOOR